

Building Data Summary	
Project ID:	*****

Scope of Work:	Sitework
Date:	*****

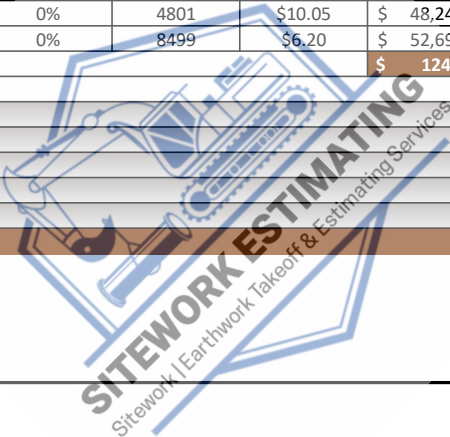
Item #	Ref. Sheet #	Item Description	Unit	Quantity	Wastage	Quantity w/ Wastage	Unit Material Cost	Total Material Cost	Unit Manhour	Hourly Wage	Unit Labor Cost	Total Labor Cost	Sub Cost	Total Trade Cost	
DIVISION.01 GENERAL REQUIREMENTS															
1		Supervision and Coordination	LS	1	0%	1	\$ -	\$ -	0.000	\$ -	\$ -	\$ -	\$ -		
2		Submittals and Shop drawings	LS	1	0%	1	\$ -	\$ -	0.000	\$ -	\$ -	\$ -	\$ -		
3		Final Cleaning	LS	1	0%	1	\$ -	\$ -	0.000	\$ -	\$ -	\$ -	\$ -		
4		Mobilization Costs	LS	1	0%	1	\$ -	\$ -	0.000	\$ -	\$ -	\$ -	\$ -		
5		Temporary Control & Facilities	LS	1	0%	1	\$ -	\$ -	0.000	\$ -	\$ -	\$ -	\$ -		
6		compaction testing	LS	1	0%	1	\$ -	\$ -	0.000	\$ -	\$ -	\$ -	\$ -		
		Subtotal (General Requirements)												\$ -	
DIVISION 02- SITE WORK/ EXISTING CONDITIONS															
		Site Work													
7		Striping, Clearing and Grubbing (4-Inches)	C.Y.	1876.11	0%	1876	\$8.50	\$ 15,946.94	0.000	\$ -	\$ -	\$1.50	\$ 15,948.44		
8		Crushed Rock (4 Inch)	C.Y.	1062.29	0%	1062	\$7.50	\$ 7,967.18	0.000	\$ -	\$ -	\$2.50	\$ 7,969.68		
9		Import and/or Export of Fill and Soil	C.Y.	4800.96	0%	4801	\$10.05	\$ 48,249.65	0.000	\$ -	\$ -	\$1.85	\$ 48,251.50		
10		Proposed Gravel Road	SF	8499	0%	8499	\$6.20	\$ 52,693.80	0.000	\$ -	\$ -	\$1.85	\$ 52,695.65		
		Subtotal (Site Work/ Existing Conditions)						\$ 124,858				\$ 8		\$ 124,865	
													PROJECTED COST	\$ 124,865	
													INSURANCE	3%	\$ 3,746
													CONTINGENCY	5%	\$ 6,243
													OVERHEAD AND PROFIT	16%	\$ 19,779
													TAX	3.07%	\$ 3,833
													SUGGESTED BID	\$ 158,466	

Note:

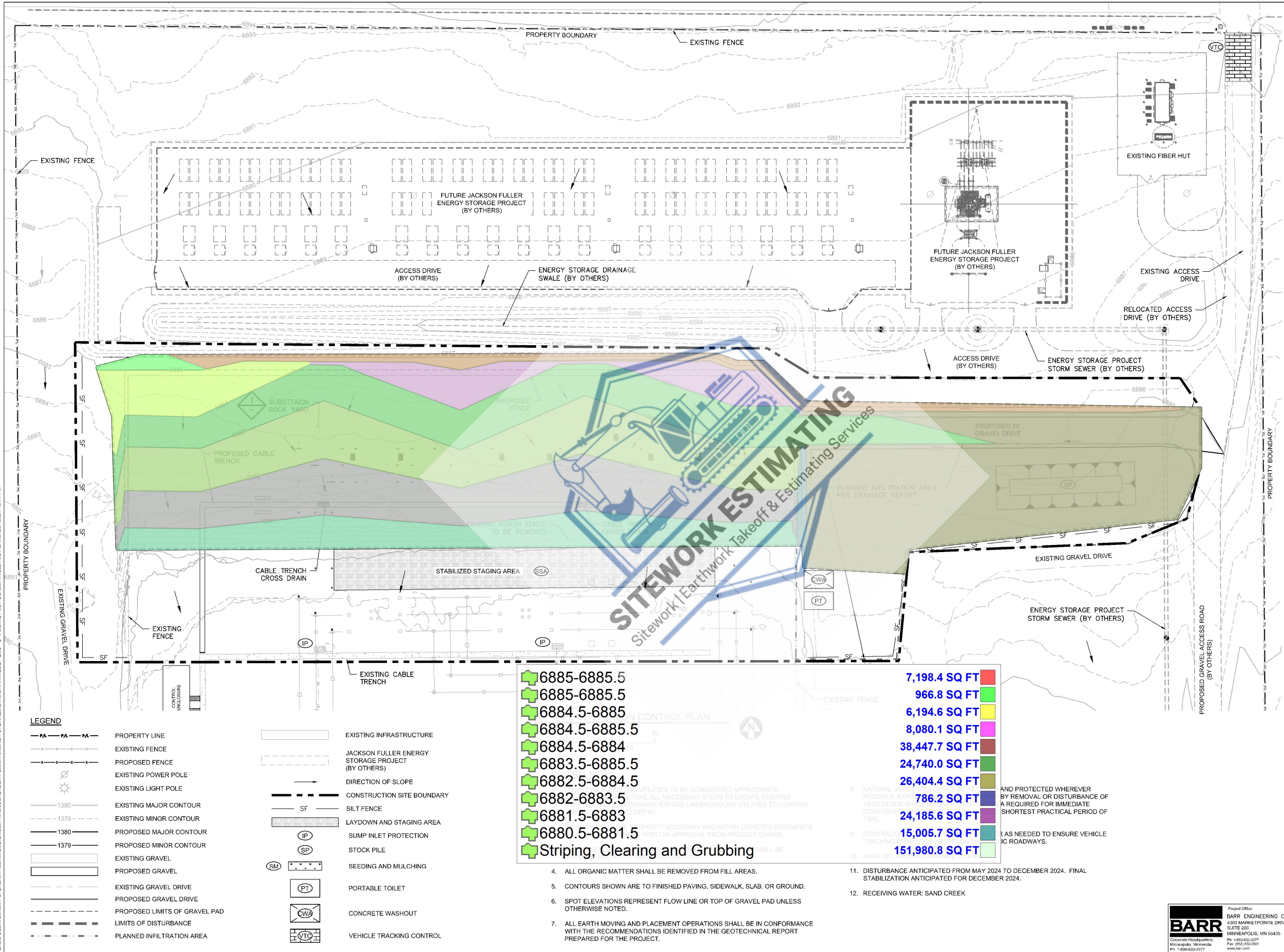
1.Please verify the equipment's and their prices with owner.

2.Online sources are used for pricing.

3.Prices can vary depending upon field conditions.



CADD USER: JEREMY J. GAGNIK FILE: I:\DESIGN\2021\1015.JACKSON FULLER ENERGY STORAGE\CIVIL DRAWINGS\JF GEO - C-470.DWG PLOT SCALE: 1:1,000 PLOT DATE: 06/21/2024 12:14 PM



C-470	COLORADO SPRINGS UTILITIES		SCALE	4				8		
	SUBSTATION & TRANSMISSION ENGINEERING	JACKSON FULLER SUBSTATION INITIAL EROSION CONTROL PLAN	NOT TO SCALE	3				7		
			ENGR: JG2	2				6		
			DATE: 06/21/24	1				5		
			DRAWN BY: AAB	NO	DATE		BY	CK	NO	DATE
	SHEET 8 OF 10		CH'KD: JG2	NO	DATE		REVISION		BY	CK
							REVISION		BY	CK
							REVISION		BY	CK
							REVISION		BY	CK
							REVISION		BY	CK
						REVISION		BY	CK	

BARR
Corporate Headquarters
Minneapolis, Minnesota
Ph: 612-632-2277
Fax: 612-632-2277

Project Office:
BARR ENGINEERING CO.
4300 MARKETPOINTE DRIVE
SUITE 200
MINNEAPOLIS, MN 55435
Ph: 612-632-2277
Fax: 612-632-2277
www.barr.com

