

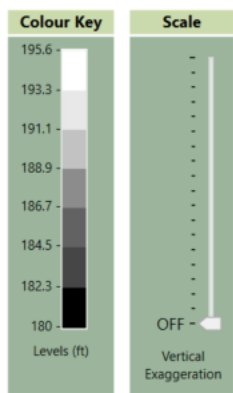
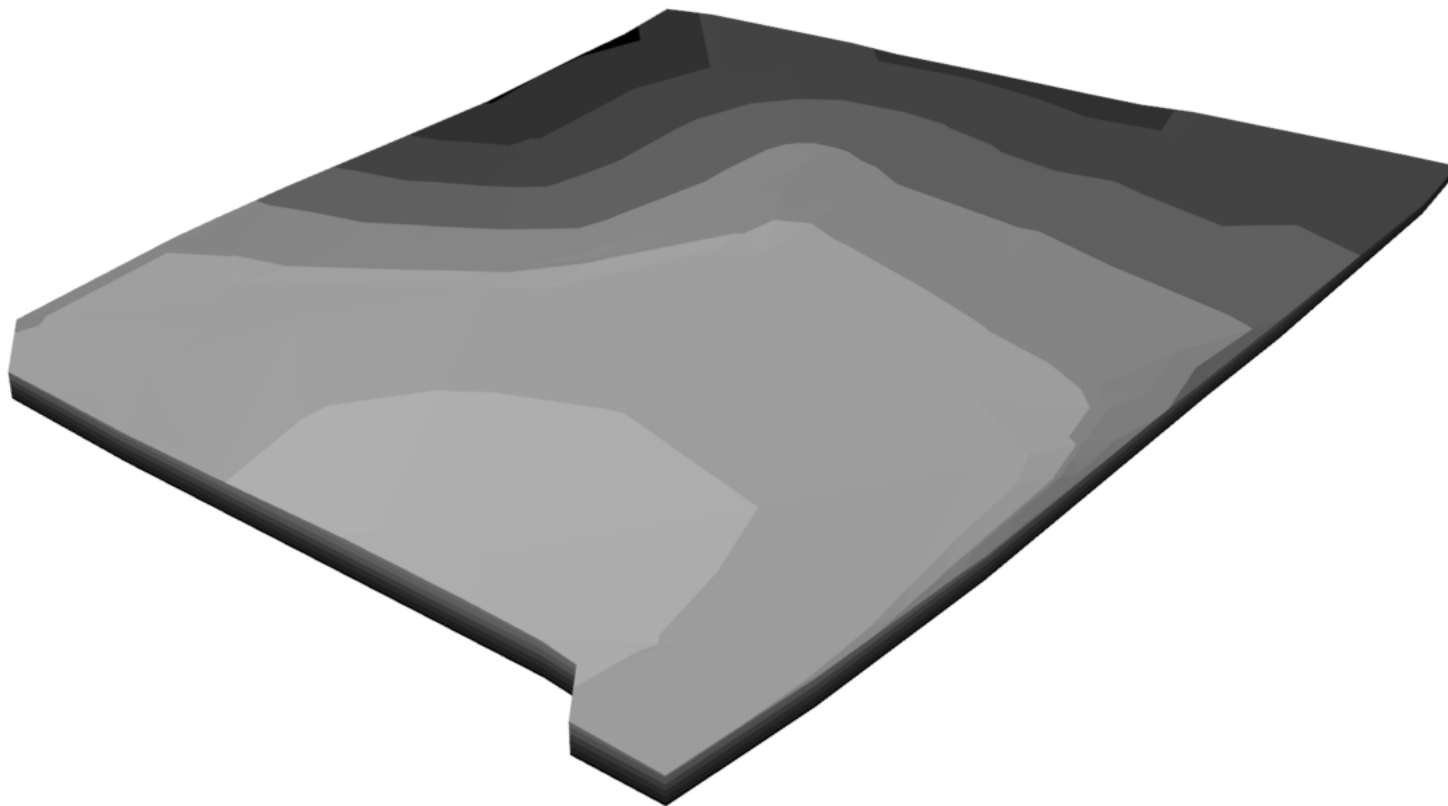
PROJECT		CLAYTON GLASS/FLEX BUILDING												Rev-0
ADDRESS		SMITHFIELD, NORTH CAROLINA												
Date of plans														
Date of submission														
BASE BID		\$ -												
SR. NO.	DWG. NO.	DETAIL NO.	CSI	DESCRIPTION	QTY.	WASTE	QTY. W/ WASTE	UNIT	Labor Cost	Material Cost	TOTAL UNIT COST	TOTAL COST	SUB TOTAL	
	DEMOLITION													
				DEMOLITION										
	CE-02	CE-02		Sawcut	148	0%	148	LF	\$ -	\$ -	\$ -	\$ -		
	CE-02	CE-02	37 CY	Removed Asphalt Pavement	1191	0%	1,191	SF	\$ -	\$ -	\$ -	\$ -		
	CE-02	CE-02	37 CY	Loads to be hauled away (20 loads/CY)	2	0%	2	Loads	\$ -	\$ -	\$ -	\$ -		
				Subtotal									\$ -	
	EROSION SEDIMENT CONTROL													
				EROSION SEDIMENT CONTROL										
	C5.00	Plan		Allowance for eroison sediment control Item	1	0%	1	LS	\$ -	\$ -	\$ -	\$ -		
				Erosion control items not found in plan.so we have provided allowance.										
				Subtotal									\$ -	
	EARTHWORK													
				GRADING FOR ON SITE										
	CE-03			Clearing & Grubbiing - Area: 129,998 SF	1	0%	1	LS	\$ -	\$ -	\$ -	\$ -		
	CE-03	Assumed		6" Topsoil Stripping Assumed - Area: 129,998 SF	2407	3%	2,480	CY	\$ -	\$ -	\$ -	\$ -		
	CE-03	Assumed		6" Topsoil Respread Assumed - Area: 44,710 SF	828	3%	853	CY	\$ -	\$ -	\$ -	\$ -		
	CE-03			Excess Topsoil	1579	3%	1,627	CY						
				We have assumed detail of topsoil stripping and topsoil respread.										
	CE-03			Loads to be hauled away (20 loads/CY)	82	0%	82	Loads	\$ -	\$ -	\$ -	\$ -		
	CE-03	Grading Model		Cut for mass grading	5293	3%	5,452	CY	\$ -	\$ -	\$ -	\$ -		
	CE-03	Grading Model		Fill for mass grading	4414	3%	4,546	CY	\$ -	\$ -	\$ -	\$ -		
	CE-03	Grading Model		Net Cut	879	3%	905	CY						
	CE-03			Excavation For Trench /footing	914	3%	941	CY						
	CE-03			Backfill For Trench /footing	512	3%	527	CY						
	CE-03			Excess Soil	402	3%	414	CY						
	CE-03			Net Cut	1281	0%	1,281	CY						
	CE-03			Loads to be Imported (20 loads/CY)	65	0%	65	Loads	\$ -	\$ -	\$ -	\$ -		
				Subtotal									\$ -	

PROJECT		CLAYTON GLASS/FLEX BUILDING												Rev-0
ADDRESS		SMITHFIELD, NORTH CAROLINA												
Date of plans														
Date of submission														
BASE BID		\$ -												
SR. NO.	DWG. NO.	DETAIL NO.	CSI	DESCRIPTION	QTY.	WASTE	QTY. W/ WASTE	UNIT	Labor Cost	Material Cost	TOTAL UNIT COST	TOTAL COST	SUB TOTAL	
	SITE IMPROVEMNETS													
				HD ASPHALT PAVEMENT										
	CE-02	Plan		3" SF9.5B Asphalt Pavement	20349	3%	20,959	SF	\$ -	\$ -	\$ -	\$ -		
	CE-02	Plan		8" CABC Aggreagte	505	3%	520	CY	\$ -	\$ -	\$ -	\$ -		
	CE-02	Plan		Compacted Subgrade	20349	3%	20,959	SF	\$ -	\$ -	\$ -	\$ -		
				LIGHT DUTY ASPHALT PAVEMENT										
	CE-02	Plan		2" SF9.5B Asphalt Pavement	5006	3%	5,156	SF	\$ -	\$ -	\$ -	\$ -		
	CE-02	Plan		6" CABC Aggreagte	93	3%	95	CY	\$ -	\$ -	\$ -	\$ -		
	CE-02	Plan		Compacted Subgrade	5006	3%	5,156	SF	\$ -	\$ -	\$ -	\$ -		
				HEAVY DUTY CONCRETE LOADING DOCK AREA										
	CE-02	Plan	66 CY	8" Thick Concrete Pavement 4000 PSI	2577	3%	2,654	SF	\$ -	\$ -	\$ -	\$ -		
	CE-02	Plan		Control Joint	412	3%	425	LF	\$ -	\$ -	\$ -	\$ -		
	CE-02	Plan		Expantion Joint	206	3%	212	LF	\$ -	\$ -	\$ -	\$ -		
	CE-02	Plan		8" CABC Aggreagte	64	3%	66	CY	\$ -	\$ -	\$ -	\$ -		
	CE-02	Plan		8" Edge Form	206	3%	212	LF	\$ -	\$ -	\$ -	\$ -		
	CE-02	Plan		Compacted Subgrade	2577	3%	2,654	SF	\$ -	\$ -	\$ -	\$ -		
				CONCRETE PAD AT TRASH										
	CE-02	Plan	4 CY	8" Thick Concrete Pavement 4000 PSI	143	3%	147	SF	\$ -	\$ -	\$ -	\$ -		
	CE-02	Plan		Control Joint	23	3%	24	LF	\$ -	\$ -	\$ -	\$ -		
	CE-02	Plan		Expantion Joint	11	3%	12	LF	\$ -	\$ -	\$ -	\$ -		
	CE-02	Plan		8" CABC Aggreagte	4	3%	4	CY	\$ -	\$ -	\$ -	\$ -		
	CE-02	Plan		8" Edge Form	48	3%	49	LF	\$ -	\$ -	\$ -	\$ -		
	CE-02	Plan		Compacted Subgrade	143	3%	147	SF	\$ -	\$ -	\$ -	\$ -		
				CONCRETE SIDEWALK										
	CE-02	Plan	36 CY	4" Thick Concrete Sidewalk 4000 PSI	2789	3%	2,873	SF	\$ -	\$ -	\$ -	\$ -		
	CE-02	Plan		Control Joint	446	3%	460	LF	\$ -	\$ -	\$ -	\$ -		
	CE-02	Plan		Expantion Joint	223	3%	230	LF	\$ -	\$ -	\$ -	\$ -		
	CE-02	Plan		4" Edge Form	580	3%	597	LF	\$ -	\$ -	\$ -	\$ -		
	CE-02	Plan		Compacted Subgrade	2789	3%	2,873	SF	\$ -	\$ -	\$ -	\$ -		
				GRAVEL										
	CE-02	Plan		8" Thick CABC Gravel	774	3%	797	CY	\$ -	\$ -	\$ -	\$ -		
				RETAINING WALL										

PROJECT		CLAYTON GLASS/FLEX BUILDING											Rev-0
ADDRESS		SMITHFIELD, NORTH CAROLINA											
Date of plans													
Date of submission													
BASE BID		\$ -											
SR. NO.	DWG. NO.	DETAIL NO.	CSI	DESCRIPTION	QTY.	WASTE	QTY. W/ WASTE	UNIT	Labor Cost	Material Cost	TOTAL UNIT COST	TOTAL COST	SUB TOTAL
	CE-02	Plan		Allan Block Classic Wall -Color: Cross Creek -Geogrid Reinforced Type -Well Graded Granular Wall Rock -Filter Fabric Average H: +-5	1860	3%	1,916	SF	\$ -	\$ -	\$ -	\$ -	
				SIGN FOOTING -Dia:1'-0" -Depth:4'-0" Count: 4 EA									
	CE-02	Assumed		Concrete 3500 PSI	2	3%	2	CY	\$ -	\$ -	\$ -	\$ -	
	CE-02	Assumed		Excavation	4	3%	4	CY	\$ -	\$ -	\$ -	\$ -	
	CE-02	Assumed		Backfill	2	3%	2	CY	\$ -	\$ -	\$ -	\$ -	
	CE-02	Assumed		Circular Formwork	100	3%	103	SFCA	\$ -	\$ -	\$ -	\$ -	
	CE-02	Assumed		H.C Sign	4	0%	4	EA	\$ -	\$ -	\$ -	\$ -	
				BOLLARDS FOOTING -Dia:2'-0" -Depth:4'-0" Count: 2 EA									
	CE-02	Assumed		Concrete 3500 PSI	1	3%	1	CY	\$ -	\$ -	\$ -	\$ -	
	CE-02	Assumed		Excavation	2	3%	2	CY	\$ -	\$ -	\$ -	\$ -	
	CE-02	Assumed		Backfill	1	3%	1	CY	\$ -	\$ -	\$ -	\$ -	
	CE-02	Assumed		Circular Formwork	50	3%	52	SFCA	\$ -	\$ -	\$ -	\$ -	
	CE-02	Assumed		Bollards	3	0%	3	EA	\$ -	\$ -	\$ -	\$ -	
				CURB									
	CE-02	CE-02		Concrete Curb	281	3%	289	LF	\$ -	\$ -	\$ -	\$ -	
				MISC ITEMS									
	CE-02			Landscape Area	1077	3%	1,109	SF	\$ -	\$ -	\$ -	\$ -	
	CE-02			2" CALIPE 8'-0" H Trees	10	0%	10	EA	\$ -	\$ -	\$ -	\$ -	
	CE-02			Asphalt valley Swale	155	3%	160	SF	\$ -	\$ -	\$ -	\$ -	
	CE-02			Wheel Stop	28	0%	28	EA	\$ -	\$ -	\$ -	\$ -	
				PAVEMENT MARKING									
	CE-02	CE-02		ADA Accessible Marking	216	3%	223	LF	\$ -	\$ -	\$ -	\$ -	
	CE-02	CE-02		ADA Accessible Marking Symbol	4	0%	4	EA	\$ -	\$ -	\$ -	\$ -	
	CE-02	CE-02		Parking Stall Marking	460	3%	474	LF	\$ -	\$ -	\$ -	\$ -	
				Subtotal									\$ -

PROJECT		CLAYTON GLASS/FLEX BUILDING												Rev-0
ADDRESS		SMITHFIELD, NORTH CAROLINA												
Date of plans														
Date of submission														
BASE BID		\$ -												
SR. NO.	DWG. NO.	DETAIL NO.	CSI	DESCRIPTION	QTY.	WASTE	QTY. W/ WASTE	UNIT	Labor Cost	Material Cost	TOTAL UNIT COST	TOTAL COST	SUB TOTAL	
	SITE UTILITIES													
				STORM SERVICES										
	CE-03	Plan		24" RCP Storm Line	11	3%	11	LF	\$ -	\$ -	\$ -	\$ -		
	CE-03	Plan		Excavation	9	3%	10	CY	\$ -	\$ -	\$ -	\$ -		
	CE-03	Plan		Bedding Material	4	3%	4	CY	\$ -	\$ -	\$ -	\$ -		
	CE-03	Plan		Backfill	4	3%	4	CY	\$ -	\$ -	\$ -	\$ -		
	CE-03	Plan		18" RCP Storm Line	89	3%	92	LF	\$ -	\$ -	\$ -	\$ -		
	CE-03	Plan		Excavation	69	3%	71	CY	\$ -	\$ -	\$ -	\$ -		
	CE-03	Plan		Bedding Material	29	3%	30	CY	\$ -	\$ -	\$ -	\$ -		
	CE-03	Plan		Backfill	35	3%	36	CY	\$ -	\$ -	\$ -	\$ -		
	CE-03	Plan		15" RCP Class IV Storm Line	164	3%	169	LF	\$ -	\$ -	\$ -	\$ -		
	CE-03	Plan		Excavation	118	3%	122	CY	\$ -	\$ -	\$ -	\$ -		
	CE-03	Plan		Bedding Material	47	3%	48	CY	\$ -	\$ -	\$ -	\$ -		
	CE-03	Plan		Backfill	64	3%	66	CY	\$ -	\$ -	\$ -	\$ -		
	CE-03	Plan		15" RCP Storm Line	541	3%	557	LF	\$ -	\$ -	\$ -	\$ -		
	CE-03	Plan		Excavation	391	3%	402	CY	\$ -	\$ -	\$ -	\$ -		
	CE-03	Plan		Bedding Material	154	3%	159	CY	\$ -	\$ -	\$ -	\$ -		
	CE-03	Plan		Backfill	212	3%	218	CY	\$ -	\$ -	\$ -	\$ -		
	CE-03	Plan		6" Roof Drain Line	367	3%	378	LF	\$ -	\$ -	\$ -	\$ -		
	CE-03	Plan		Excavation	170	3%	175	CY	\$ -	\$ -	\$ -	\$ -		
	CE-03	Plan		Bedding Material	65	3%	67	CY	\$ -	\$ -	\$ -	\$ -		
	CE-03	Plan		Backfill	102	3%	105	CY	\$ -	\$ -	\$ -	\$ -		
				STORM STRUCTURE										
	CE-03	Plan		Drain Inlet -Size: 2'-0" x 3'-0"	7	0%	7	EA	\$ -	\$ -	\$ -	\$ -		
	CE-03	Plan		Excavation	19	3%	19	CY	\$ -	\$ -	\$ -	\$ -		
	CE-03	Plan		Backfill	11	3%	11	CY	\$ -	\$ -	\$ -	\$ -		
				MISC ITEMS										
	CE-03	Plan		15" RCP Flared End Section	1	0%	1	EA	\$ -	\$ -	\$ -	\$ -		
	CE-03	Plan		6" 45 Degree Bend	14	0%	14	EA	\$ -	\$ -	\$ -	\$ -		
	CE-03	Plan		6" Cleanout Roof Drain	12	0%	12	EA	\$ -	\$ -	\$ -	\$ -		
	CE-03	Plan		6" Wye Connection	8	0%	8	EA	\$ -	\$ -	\$ -	\$ -		
	CE-03	Plan		OCS 2'-0" x 3'-0"	1	0%	1	EA	\$ -	\$ -	\$ -	\$ -		
				WATER SERVICES										

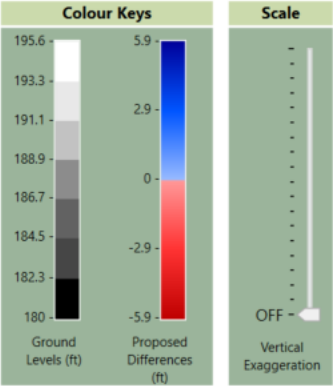
PROJECT		CLAYTON GLASS/FLEX BUILDING												Rev-0
ADDRESS		SMITHFIELD, NORTH CAROLINA												
Date of plans														
Date of submission														
BASE BID		\$ -												
Sr. No.	DWG. No.	Detail No.	CSI	DESCRIPTION	QTY.	WASTE	QTY. W/ WASTE	UNIT	Labor Cost	Material Cost	TOTAL UNIT COST	TOTAL COST	SUB TOTAL	
	CE-03	Plan		8" Dip Water Line	49	3%	51	LF	\$ -	\$ -	\$ -	\$ -		
	CE-03	Plan		Excavation	29	3%	30	CY	\$ -	\$ -	\$ -	\$ -		
	CE-03	Plan		Clean Well Graded Material	10	3%	10	CY	\$ -	\$ -	\$ -	\$ -		
	CE-03	Plan		Backfill	19	3%	19	CY	\$ -	\$ -	\$ -	\$ -		
	CE-03	Plan		2" Water Service Line	110	3%	114	LF	\$ -	\$ -	\$ -	\$ -		
	CE-03	Plan		Excavation	44	3%	46	CY	\$ -	\$ -	\$ -	\$ -		
	CE-03	Plan		Clean Well Graded Material	15	3%	15	CY	\$ -	\$ -	\$ -	\$ -		
	CE-03	Plan		Backfill	30	3%	30	CY	\$ -	\$ -	\$ -	\$ -		
				MISC ITEMS										
	CE-03	CE-03		1.5" Water Meter	1	0%	1	EA	\$ -	\$ -	\$ -	\$ -		
	CE-03	CE-03		16" x 16" x 8" TEE Sleeve and valve	1	0%	1	EA	\$ -	\$ -	\$ -	\$ -		
	CE-03	CE-03		2" Water Service Tap	1	0%	1	EA	\$ -	\$ -	\$ -	\$ -		
	CE-03	CE-03		8" Gate Valve	1	0%	1	EA	\$ -	\$ -	\$ -	\$ -		
	CE-03	CE-03		Backflow Preventor	1	0%	1	EA	\$ -	\$ -	\$ -	\$ -		
	CE-03	CE-03		Connection to Building	1	0%	1	EA	\$ -	\$ -	\$ -	\$ -		
	CE-03	CE-03		Fire Hydrant	1	0%	1	EA	\$ -	\$ -	\$ -	\$ -		
	CE-03	CE-03		Hosse Pull Line	709	10%	780	LF	\$ -	\$ -	\$ -	\$ -		
				SANITARY SERVICES										
	CE-03	Plan		4" PVC Sanitary Line	104	3%	107	LF	\$ -	\$ -	\$ -	\$ -		
	CE-03	Plan		Excavation	45	3%	46	CY	\$ -	\$ -	\$ -	\$ -		
	CE-03	Plan		Clean Well Graded Material	16	3%	17	CY	\$ -	\$ -	\$ -	\$ -		
	CE-03	Plan		Backfill	28	3%	29	CY	\$ -	\$ -	\$ -	\$ -		
	CE-03	Plan		48" Dia Storm Manhole With Frame and cover	3	0%	3	EA	\$ -	\$ -	\$ -	\$ -		
	CE-03	Plan		Excavation	13	3%	13	CY	\$ -	\$ -	\$ -	\$ -		
	CE-03	Plan		Clean Well Graded Material	2	3%	2	CY	\$ -	\$ -	\$ -	\$ -		
	CE-03	Plan		Backfill	5	3%	5	CY	\$ -	\$ -	\$ -	\$ -		
				MISC ITEMS										
	CE-03	CE-03		4" 45 Degree Bend	1	0%	1	EA	\$ -	\$ -	\$ -	\$ -		
	CE-03	CE-03		Connection To Building	1	0%	1	EA	\$ -	\$ -	\$ -	\$ -		
	CE-03	CE-03		Connection To Existing Line	1	0%	1	EA	\$ -	\$ -	\$ -	\$ -		
				Subtotal								\$ -		
TOTAL												\$ -	\$ -	
OVER HEAD & PROFIT												15.00%	\$ -	\$ -
SALES TAX												6.00%	\$ -	\$ -
BASE BID												\$ -	\$ -	



Cut	
Volume	2,407.38yd³
2D Area	129,998.27ft²
3D Area	130,142.84ft²
Depths	0.50ft Av., 0.50ft Max.
Levels	181.24ft to 195.00ft

Fill	
Volume	--
2D Area	--
3D Area	--
Heights	--
Levels	--

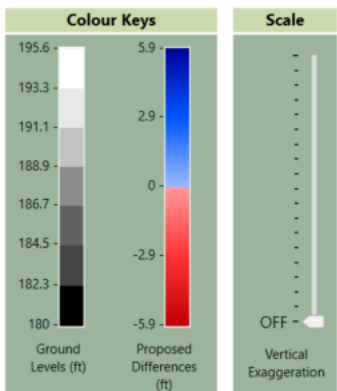
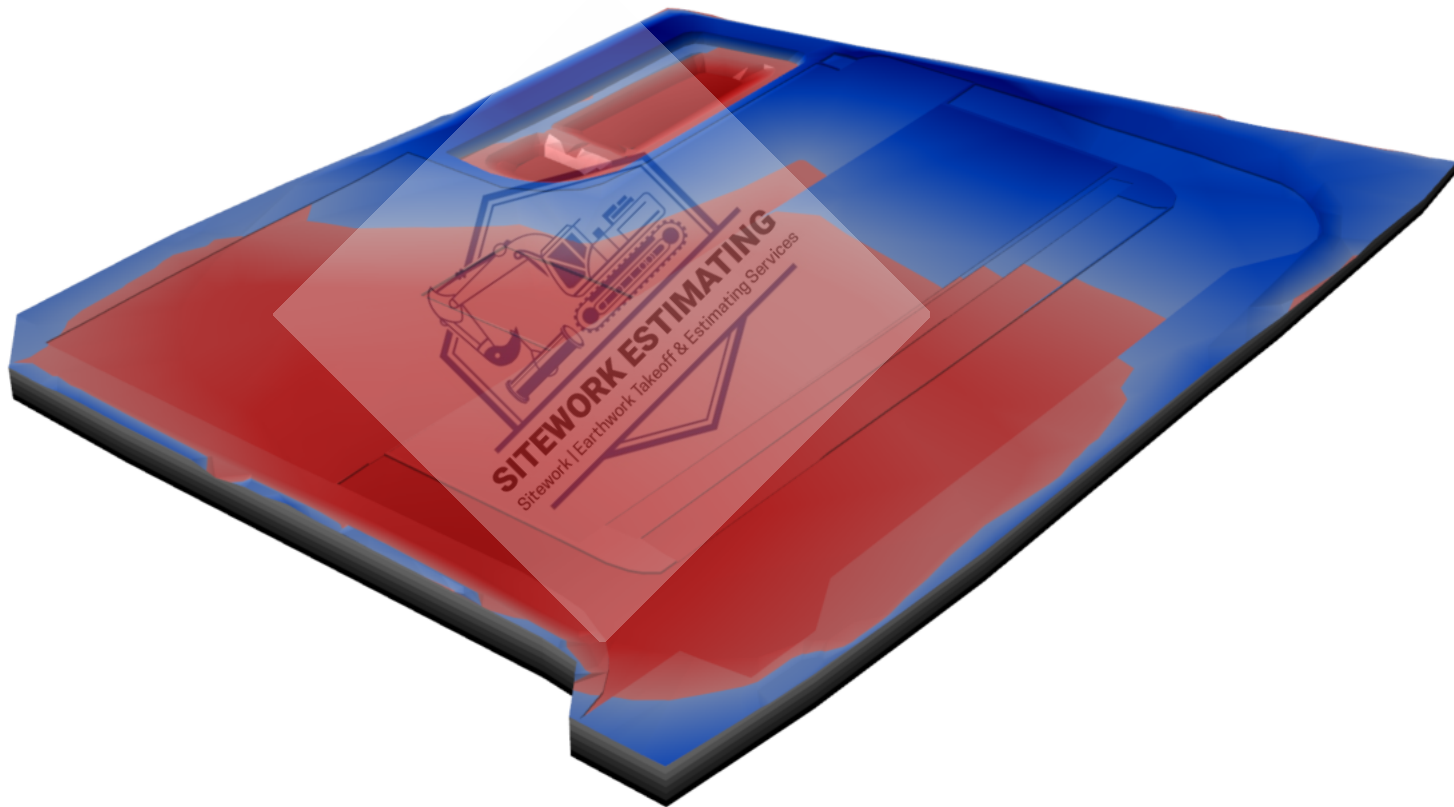
Cut & Fill	
Net Volume	2,407.38yd³ cut
2D Area	129,998.27ft²
3D Area	130,142.84ft²
Range	-0.50ft to 0.00ft, -0.50ft Av.
Levels	181.24ft to 195.00ft



Cut	
Volume	5,292.77yd ³
2D Area	72,859.82ft ²
3D Area	75,255.37ft ²
Depths	1.96ft Av., 5.89ft Max.
Levels	180.00ft to 194.50ft

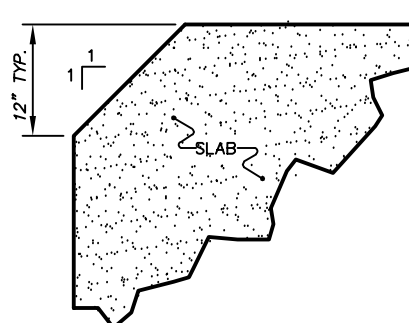
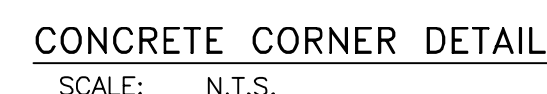
Fill	
Volume	4,414.25yd ³
2D Area	57,138.45ft ²
3D Area	59,314.52ft ²
Heights	2.09ft Av., 5.89ft Max.
Levels	181.24ft to 195.62ft

Cut & Fill	
Net Volume	878.51yd ³ cut
2D Area	129,998.27ft ²
3D Area	134,569.89ft ²
Range	-5.89ft to 5.89ft, -0.18ft Av.
Levels	180.00ft to 195.62ft

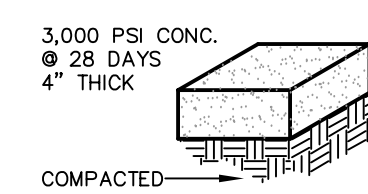




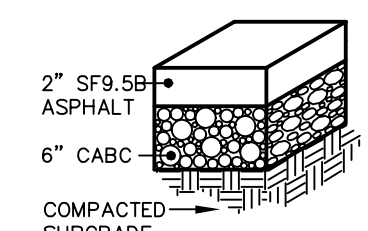
Legend			
	Label	Quantity	Unit
✓	1.5" WATER METER	1	Count
▲	2" CALIPE 8'-0" H	10	Count
↗	2" WATER SERVICE LINE	110.46	ft
✓	2" WATER SERVICE TAP	1	Count
↘	4" 45 DEGREE BEND	1	Count
↗	4" SANITARY SEWER LINE	103.93	ft
↗	8" DIP WATER LINE	49.19	ft
✓	8" GATE VALVE	1	Count
■	8" THICK GRAVEL	31,193	sf
✓	16" x 16" x 8" TEE SLEEVE AND VALVE	1	Count
▲	ADA ACCESSIBLE MARKING SYMBOL	4	Count
✓	ADA ACCESSIBLE MARKING	216.30	ft
↗	BACKFLOW PREVENTER	1	Count
▲	BOLLARDS	2	Count
↗	CONCRETE CURB	280.54	ft
✓	CONNECTION TO BUILDING SANITARY	1	Count
✓	CONNECTION TO BUILDING WATER	1	Count
✓	CONNECTION TO EXISTING LINE	1	Count
■	EXISTING ASPHALT TBR	1,191	sf
✓	FIRE HYDRANT	1	Count
▲	H.C SIGN	4	Count
■	HD ASPHALT PAVEMENT	20,349	sf
■	HD CONCRETE PAD	143	sf
↗	HOSSE PULL LINE	708.67	ft
■	LANDSCAPE AREA	1,077	sf
■	LIGHT DUTY ASPHALT PAVEMENT	5,006	sf
■	LOADING DOCK AREA	2,577	sf
↗	PARKING STALL MARKING	459.78	ft
↗	SAWCUT	148.34	ft
■	SIDEWALK	2,789	sf
▲	WHEEL STOP	28	Count



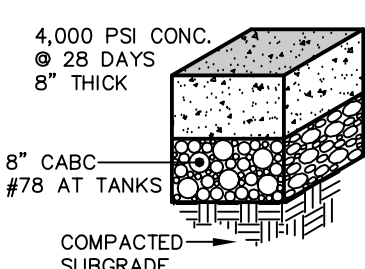
(SIDEWALKS)
LIGHT DUTY
RIGID PAVEMENT
NOT TO SCALE



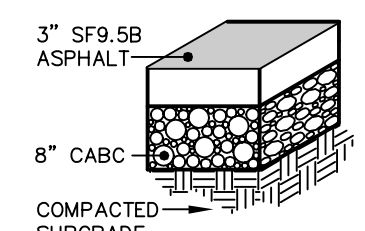
HEAVY DUTY
FLEXIBLE PAVEMENT
NOT TO SCALE



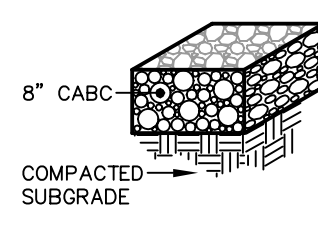
HEAVY DUTY
RIGID PAVEMENT
NOT TO SCALE



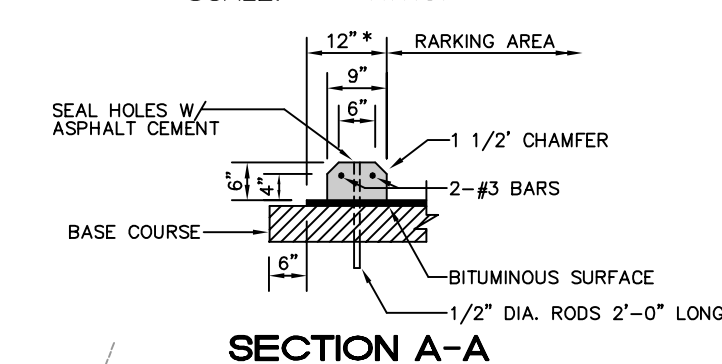
HEAVY DUTY
FLEXIBLE PAVEMENT
NOT TO SCALE



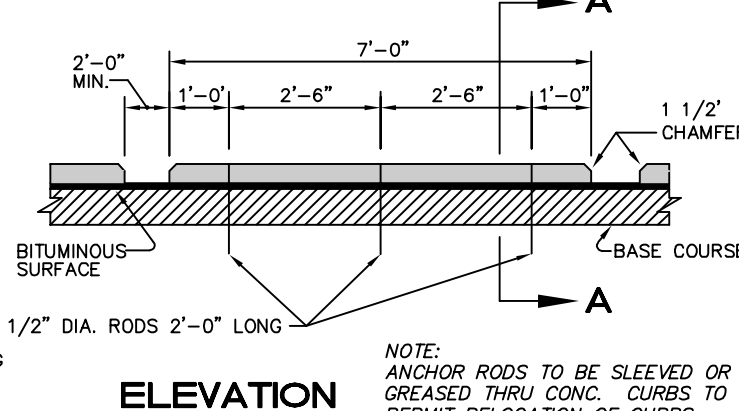
GRAVEL
NOT TO SCALE



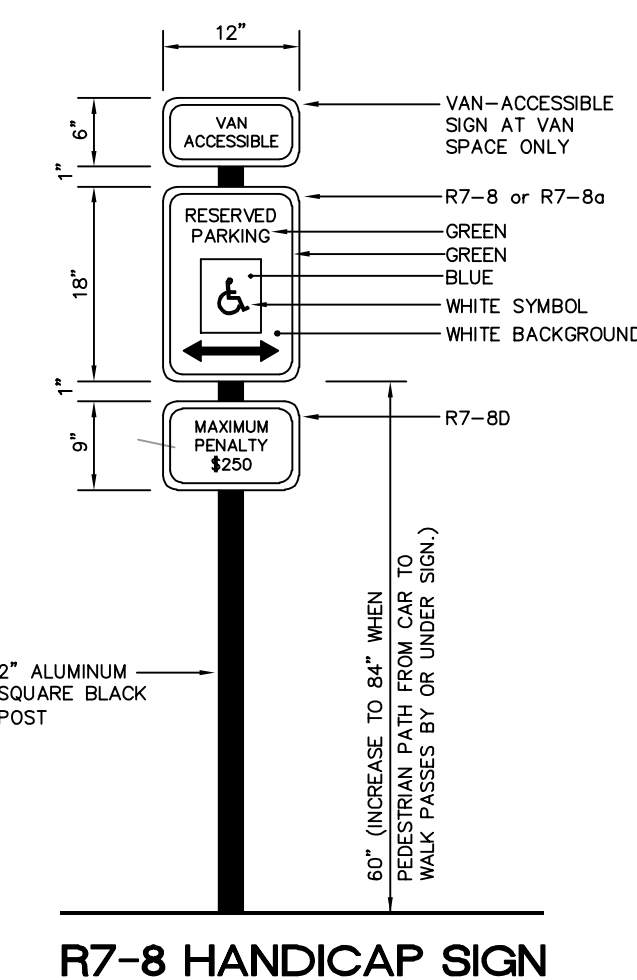
SCALE: N.T.S.



NOTE: AT H.C. SPACES USE 30"



RETAINING WALL = ±1,850 SF
 CONTRACTOR TO SUBMIT SHOP DRAWINGS/SEAL
 DESIGN ON WALL FROM PROFESSIONAL ENGINEER.
 BOTTOM OF WALL = 183.5'
 TOP OF WALL = 188.5'
 MINIMUM HEIGHT = ±5.0'
 MAXIMUM HEIGHT = ±5.0'
 WALL TO BE ALLAN BLOCK CLASSIC
 COLOR: CROSS CREEK
 CONTRACTOR/DEVELOPER TO SUBMIT SAMPLE
 FOR APPROVAL PRIOR TO INSTALL.



R7-8 HANDICAP SIGN

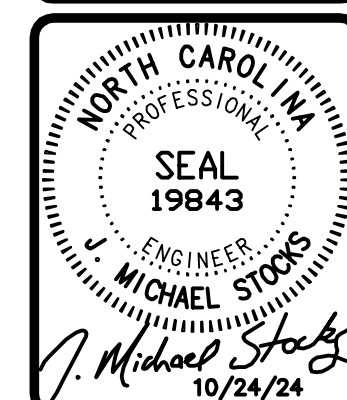
US HWY 70 W

MANY ARE THE PLANS IN A PERSONS HEART, BUT IT IS THE LORD'S PURPOSE THAT PREVAILS. PROVERBS 19:21

STOCKS ENGINEERING

BLN=C-1874

**CLAYTON GLASS/FLEX BUILDING - 24,000 SF
WILSONS MILLS, NORTH CAROLINA**







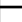









SITE and UTILITY PLAN

REVISIONS	
FILE NO.	2024-089
HORIZ. SCALE:	1" = 30'
VERT. SCALE:	NONE

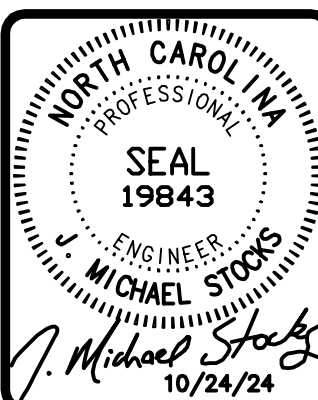
CE-02



Legend			
	Label	Quantity	Unit
	6" 45 DEGREE BEND	14	Count
	6" CLEANOUT ROOF DRAIN	12	Count
	6" ROOF DRAIN LINE	366.71	ft
	6" WYE CONNECTION	8	Count
	15" CLASS IV STORM LINE	164.00	ft
	15" RCP FLARED END SECTION	1	Count
	15" RCP STORM LINE	540.72	ft
	18" RCP STORM LINE	88.85	ft
	24" RCP STORM LINE	10.67	ft
	48" DIA STORM MH	3	Count
	ASPHALT VALLEY SWALE	155	sf
	DRAIN INLET 2x3	7	Count
	OCS 2'-0" x 3'-0" BOX	1	Count
	RETAINING WALL	372.10	ft

RETAINING WALL = ±1,850 SF
 CONTRACTOR TO SUBMIT SHOP DRAWINGS/SEAL
 DESIGN ON WALL FROM PROFESSIONAL ENGINEER
 BOTTOM OF WALL = 183.5'
 TOP OF WALL = 188.5'
 MINIMUM HEIGHT = ±5.0'
 MAXIMUM HEIGHT = ±5.0'
 WALL TO BE ALLAN BLOCK CLASSIC
 COLOR: CROSS CREEK
 CONTRACTOR/DEVELOPER TO SUBMIT SAMPLE
 FOR APPROVAL PRIOR TO INSTALL.

**CLAYTON GLASS/FLEX BUILDING - 24,000 SF
WILSONS MILLS, NORTH CAROLINA**



**DRAINAGE and
GRADING PLAN**

REVISIONS	
FILE NO.	2024-089
HORIZ. SCALE:	1" = 30'
VERT. SCALE:	NONE

CE-03

